

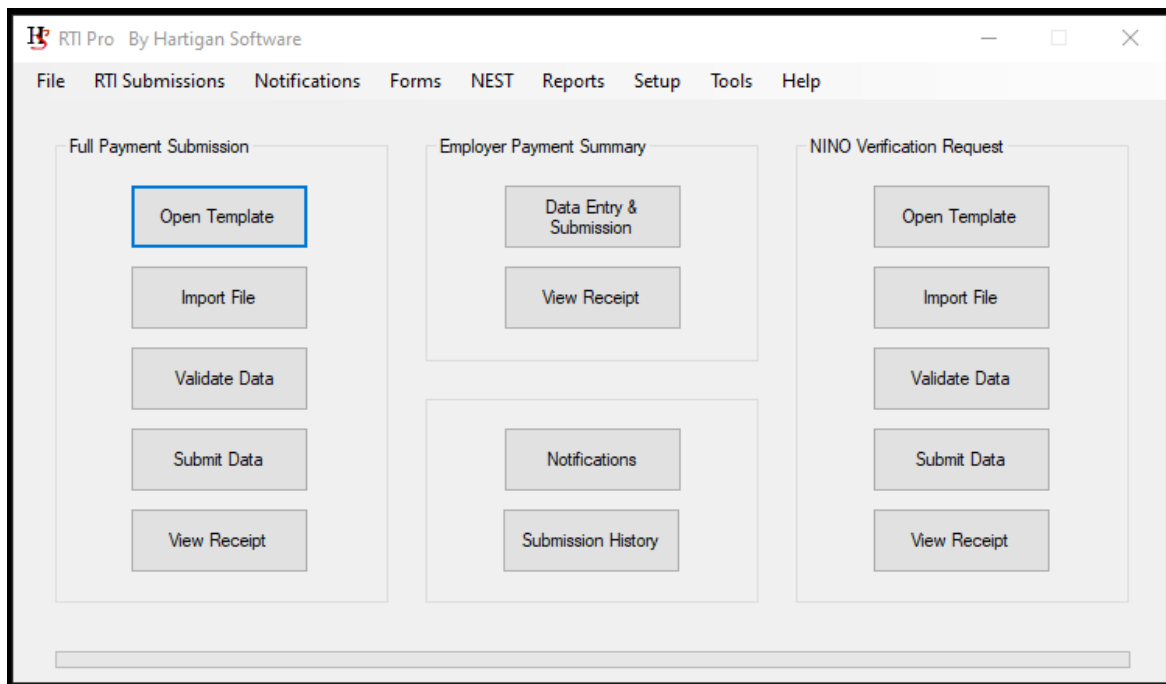
# Hartigan Software

Telephone: 01245 243800  
[enquiries@hartigansoftware.co.uk](mailto:enquiries@hartigansoftware.co.uk)  
[www.hartigansoftware.co.uk](http://www.hartigansoftware.co.uk)

## RTI Submission Software - RTI Pro

Hartigan Software currently offer three RTI submission products, **RTI Pro**, **RTI Lite**, and **RTI Payroll**. Our software runs on Microsoft Windows operating systems.

Both **RTI Pro** and **RTI Lite** collect payroll data from a file either created manually or generated by a company's existing payroll application. The file is imported into our software and the data processed and checked before submission to HMRC, **RTI Pro** offering the full range of services and **RTI Lite** offering FPS and EPS submissions with input from an Excel Spreadsheet.



While many other products require data to be uploaded to a third party server, RTI Pro removes this requirement, it is a desktop application which provides a direct connection to the Government Gateway. RTI reports are generated and submitted from the end user's PC straight to HMRC. This removes any dependency on third party web services and avoids potential data security issues.

The software is designed to interface with existing payroll software by importing data from an Excel spreadsheet or XML file in HMRC RTI standard format. The data is validated before being submitted via the Government Gateway so that any data issues can be resolved early in the process thus saving valuable time.

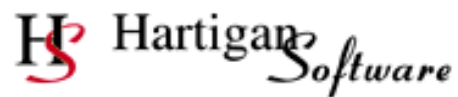
## RTI Submission Software - RTI Pro continued

Software Features Comparison	RTI Pro	RTI Lite	RTI Payroll Standard
Full Payment Submission (FPS)	√	√	√
Employer Payment Summary (EPS)	√	√	√
NEST Pensions Submissions	√		√
NI Number Verification Request	√		√
Outgoing Data Provisioning Service	√		√
Multiple Employers FPS and EPS returns from a single file	√		
Import of RTI data in HMRC RTI standard XML format	√		
Import of RTI data from Microsoft Excel	√	√	
Export HMRC notifications using XML or CSV formats.	√		
P45 and P60 printing	√		√
Unattended FPS returns	√		
Automatic EPS returns for a period of inactivity	√		
Import payroll records from a spreadsheet or CSV file.	√		
Generation and output of BACS random string	√		
Calculation of PAYE, National Insurance Contributions, and Student Loan deductions.			√

We also offer bespoke software development and can tailor the product to suit a company's individual needs, for example importing information in non-standard file formats or exporting HMRC notifications for use with a company's own in house systems.

### Proven HMRC track record

- Our HMRC e-filing software has been used to successfully submit pension, payroll and VAT returns via the Government Gateway since 2007.
- Our RTI Submission Software originally gained HMRC recognition for the 2012-13 tax year where live data was submitted as part of the HMRC pilot project.
- Our RTI applications are used by UK and overseas companies with payrolls ranging from a single worker to those with thousands of employees.



## RTI Submission Software per license cost

RTI Pro	
Number of Employees	Price Per Annum (excluding VAT)
1 - 10	£230
11 - 20	£350
21 - 50	£590
51 - 100	£710
101 - 300	£840
301 - 500	£940
501 - 800	£1,060
801 - 1,000	£1,180
1,001 - 1,500	£1,480
1,501 - 2,000	£1,770
2,001 +	P.O.A.

RTI Lite	
Number of Employees	Price Per Annum (excluding VAT)
1 - 9	Free
10 - 16	£116
17 - 30	£173
31 - 60	£231
61 - 100	£289

For further information please email [enquiries@hartigansoftware.co.uk](mailto:enquiries@hartigansoftware.co.uk)

If you wish to use our software, please review the [Instructions for Using our Software](#) document on our website.